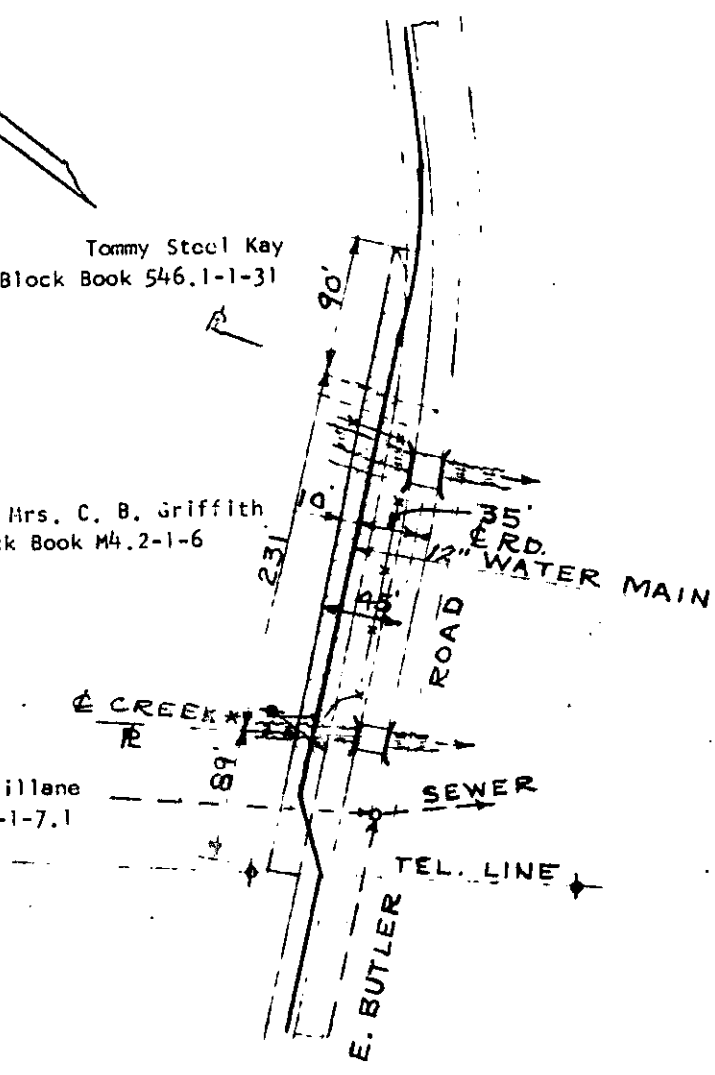


Tommy Steel Kay
Block Book 546.1-1-31

Mrs. C. B. Griffith
Block Book M4.2-1-6

Charles J. Spillane
Block Book M4.2-1-7.1



Water Line Right-Of-Way
 From Existing Hwy. R/W
 To 45' From E Of Road As Shown
 Scale 1" = 100'
 September, 1970

Recorded November 2nd, 1970 at 3:01 P. M. #10577